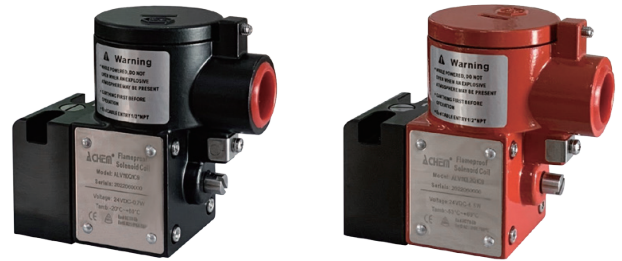


PRODUCT NAME

Low Temperature Direct Acting Solenoid Valve of Flameproof

DESCRIPTION OF THE PRODUCT

Direct acting spring return normally closed solenoid valve with Ex db IIC T6 Gb aluminium enclosure coil. According to the CNOMO-30 standard, this solenoid valve can be directly attached to various flow pneumatic valves to implement pilot control.



APPROVED BY



Coil Specification (C9)

Coil Enclosure Die-casting aluminum + Epoxy coated

Wiring Connector M20-1.5 or 1/2"NPT, Terminal Strip

BODY TECHNICAL DATA

Body	Extruded aluminum + anodized coated
Seal	Buna N
Fasteners	Stainless steel
Function	3/2 direct acting, spring return, NC,
Flow rate(Orifice)	78L/M, CV=0.08 (1.3mm)
Air Ports	φ3mm
Manual Override	on the body
Mounting	CNOMO interface
Working pressure	0~8 bar
Working Medium	less than 40μm filtered and dried air
Working Temp.	-53℃~60℃
Environment.	Indoor and Outdoor
Weather Proof	IP67

Operating Voltage 24VDC≤7W, 110/220VDC≤6.5W
24/110/220VAC≤7.5VA(50/60Hz)

Voltage Tolerance ±10%

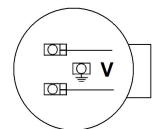
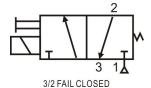
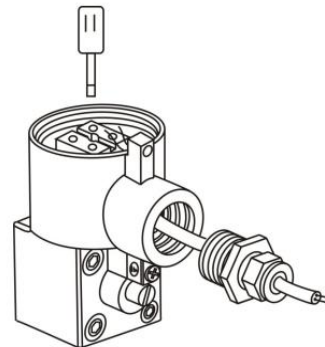
Insulation Protection H class

Insulated voltage 1000V

Duty factor 100% ED

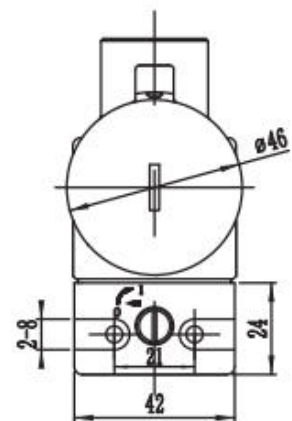
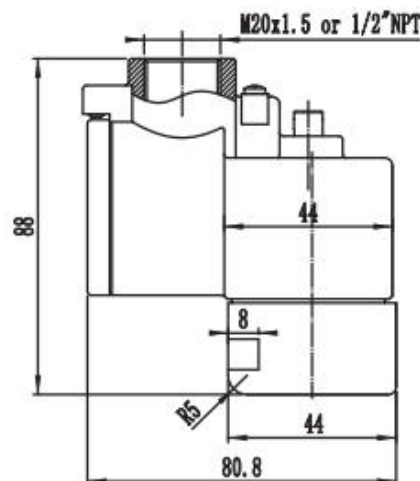
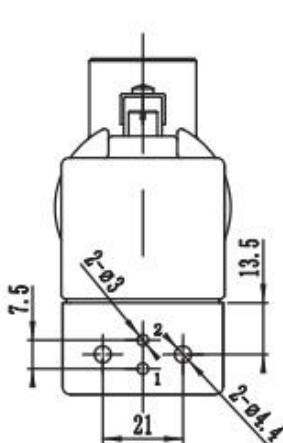
Area Classification Ex db IIC T6 Gb, Ex tb IIIC T85℃ Db, Class I, Division 1, Groups A, B, C, D T6

Wiring Diagram and Operating



Note: The Exd Cable Gland is not included. Enquiry please contact with us.

DIMENSION AND DRAWING



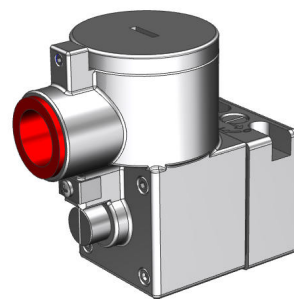
*For continuous improvement of the product, we reserve the right to alter the dimensions, technical data in this data sheet.

Data Sheet**Product IDALV210L2Q1C10****PRODUCT NAME**

Low Temperature Direct Acting Solenoid Valve of Flameproof

DESCRIPTION OF THE PRODUCT

Direct acting spring return normally closed solenoid valve with Ex db IIC T6 Gb aluminium enclosure coil. According to the CNOMO-30 standard, this solenoid valve can be directly attached to various flow pneumatic valves to implement pilot control.

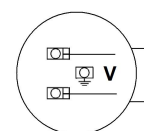
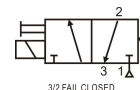
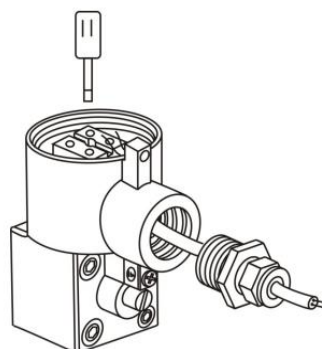
**APPROVED BY****IP67****Coil Specification (C10)**

Coil Enclosure	Stainless steel 316
Wiring Connector	M20-1.5 or 1/2"NPT, Terminal Strip

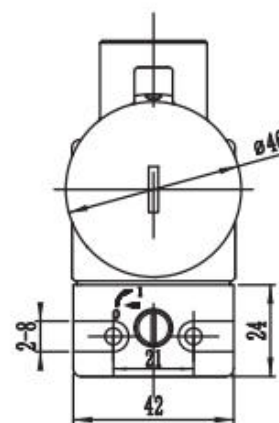
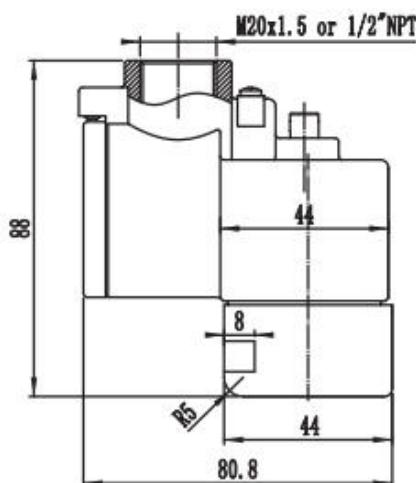
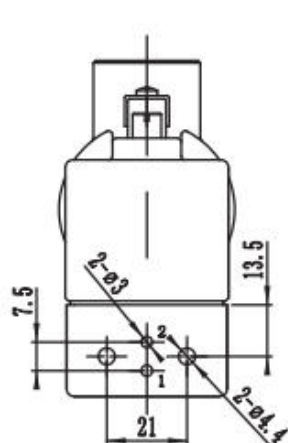
BODY TECHNICAL DATA

Body	Stainless steel 316	Operating Voltage	24VDC≤7W, 110/220VDC≤6.5W 24/110/220VAC≤7.5VA(50/60Hz)
Seal	Buna N	Voltage Tolerance	±10%
Fasteners	Stainless steel	Insulation Protection	H class
Function	3/2 direct acting, spring return, NC,	Insulated voltage	1000V
Flow rate(Orifice)	78L/M, CV=0.08 (1.3mm)	Duty factor	100% ED
Air Ports	φ3mm	Area Classification	Ex db IIC T6 Gb, Ex tb IIIC T85°C Db, Class I, Division 1, Groups A, B, C, D T6

Manual Override	on the body
Mounting	CNOMO interface
Working pressure	0~8 bar
Working Medium	less than 40μm filtered and dried air
Working Temp.	-53℃~60℃
Environment.	Indoor and Outdoor
Weather Proof	IP67

Wiring Diagram and Operating

Note: The Exd Cable Gland is not included. Enquiry please contact with us.

DIMENSION AND DRAWING

*For continuous improvement of the product, we reserve the right to alter the dimensions, technical data in this data sheet.

ALLIED AUTOMATIONwww.allied-actuator.cominfo@allied-actuator.com